

Bluebox/Western ZETA 7.2

Specifications

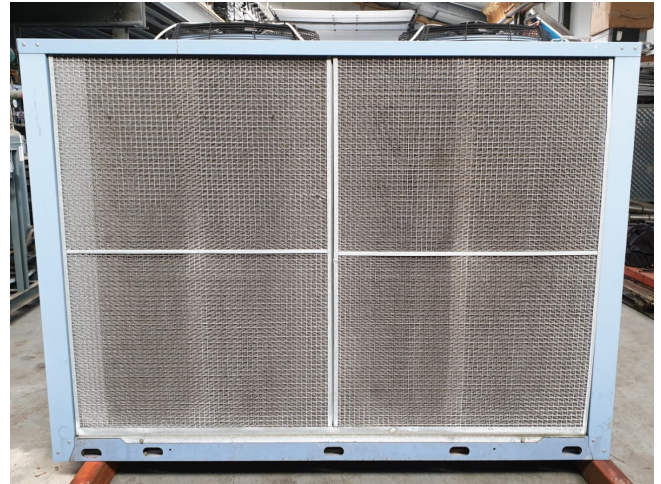
Brand	Bluebox/Western
Type	ZETA 7.2
Product type	Air Cooled Chiller
Capacity kW	66,76
Capacity Tons	18,98
Refrigerant	Freon
Refrigerant Type	R407C
Weight in kg.	631
Sizes	2233x1020x1738
Compressor(s) type & model	2 scroll compressors
Number of fans	2
Fan specifications	19.000 m3/h
Stock	1





Description

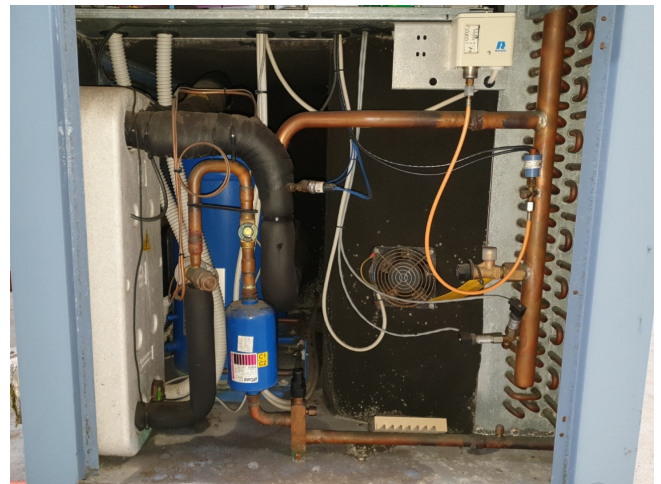
Used Bluebox/Western ZETA 7.2

Air cooled water chiller with hermetic scroll compressors build by Western Bluebox type ZETA 7.2 with brazed plate evaporators. Parallel connected hermetic rotary screw scroll type compressors with oil level gauge, klixon thermal protection and oil equalization system. Enclosed in an insulated compartment and separated from the air flow, the compressors are accessible through the special panels for maintenance operations, even when the unit is on.

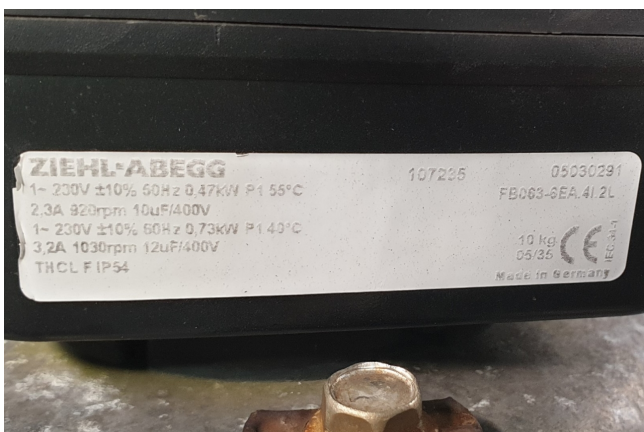


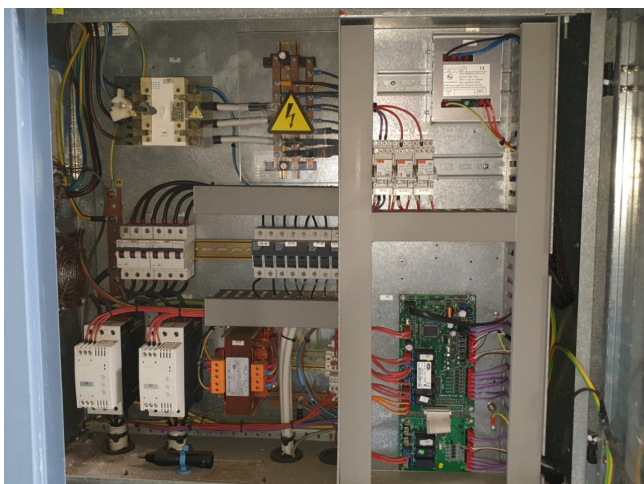
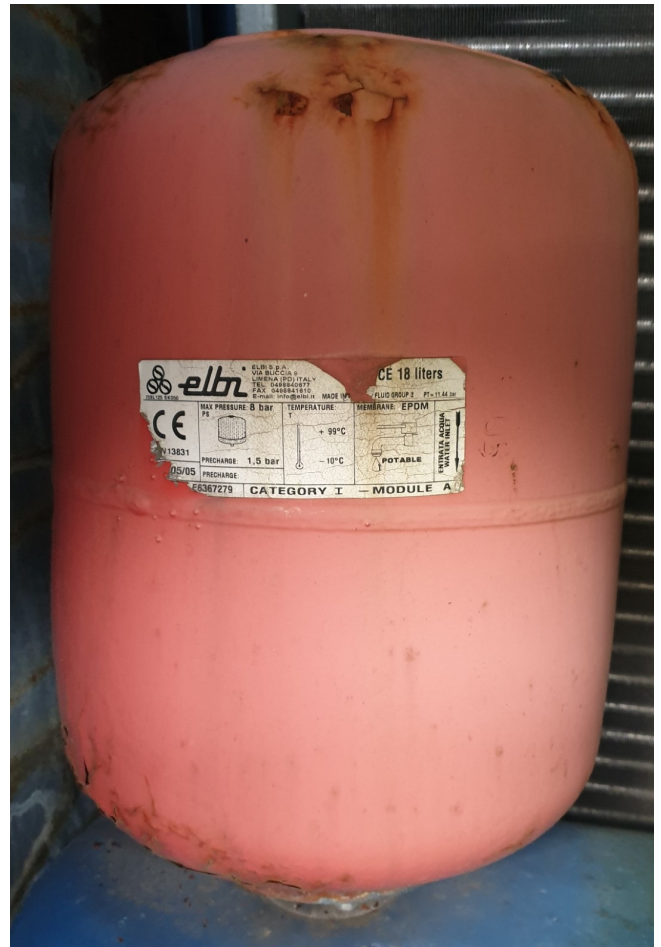
		De Wel 10 Postbus 236 3870 CE Hoevelaken Holland	 1370
Modello/Model Modell/Modèle			
ZETA 7.2 2002 ST1PS			
Tipo refrigerante Refrigerant type Kältemitteltyp Type réfrigérant	IP quadro elettrico IP electrical panel IP Schaltschrank IP tableau électrique	Matricola Serial number Seriennummer Matricule	
R407C	X4	068750/434	
Corrente massima assorbita Max. absorbed current Max. Stromaufnahme Courant maxi absorbée	Corrente massima di spunto Max starting current Max. Anlaufstrom Courant maxi de démarrage		
67 A	128 A		
Tensione-Fasi-Frequenza Voltage-Phases-Frequency Spannung-Phasen-Frequenz Tension-Phases-Fréquence	Tensione circuiti ausiliari Auxiliary circuit voltage Steuerspannung Tension circuits auxiliaires		
400V 3N ~ 50Hz	230-24V ~ 50Hz		
Numero circuiti refrigerante Refrigerant circuit number Anzahl der Kältekreise Nombre circuits réfrigérant	Press. max refriger. alta/bassa Max. Refrig. pressure high/low Max. N/n Kältemittelbetriebsdruck Pression maxi réfrig. haute/basse		
1	3000 2500 kPa 30,00 25,00 bar		
Press. massima circuito idraulico Max. hydraulic circuit pressure Max. zulässiger Druck im Wassersystem Press. Maxi circuit hydraulique	Data di produzione Date of manufacture Herstellungsdatum Date de production		
600 kPa 6,00bar	5/10/2005		
Carica refrigerante per circuito(kg)/Refrigerant charge per circuit(kg) Kältemittel Füllmenge je Kreislauf (kg)/Charge réfrigérant par circuit(kg)			
C1 + C2 = 12,5 C3 C4			
Manufactured by Blue Box Group S.r.l.			











UNIT SIZE		3.2	4.2	5.2	6.2	7.2	
Cooling							
Nominal cooling capacity	(H)	kW	40.9	45.9	51.9	60.4	66.76
Total absorbed power in cooling mode	(HSD)	kW	13.8	15.7	18.4	20.1	24.85
Compressor absorbed power	(H)	kW	12.42	14.52	17.22	18.92	23.67
EER	(H)		3.01	2.92	2.82	3.00	2.89
CO2ER			4.67	4.33	4.37	4.65	4.21
Heating							
Nominal heating capacity	(S)	kW	41.8	47.4	55.5	63.4	70.98
Total absorbed power in heating mode	(SDS)	kW	14.2	16.2	18.7	20.8	25.05
Compressor absorbed power	(S)	kW	13.02	15.02	17.82	19.62	23.87
ODP	(S)		2.93	2.93	2.97	3.05	2.83
Compressors							
Type			Scroll				
Quantity/Cooling circuits	n° / m°		2 / 1	2 / 1	2 / 1	2 / 1	
Capacity liters	m°		0-50-100	0-50-100	0-50-100	0-50-100	
Total oil load	kg		5.2	8.5	8.5	8.6	
Total refrigerant load (OH version)	kg		6.7	6.8	9	15.8	
Total refrigerant load (HP version)	kg		14.8	14.9	17	16.4	
Fans							
Type			Axial				
Quantity	n°		2	2	2	2	
Air flow	m³/h		17,000	17,000	15,000	19,000	
Evaporator							
Type			With plates				
Quantity	n°		1	1	1	1	
Water flow	l/h		7034	7893	8908	10387	
Pressure drop	kPa		65.0	95.7	94.8	91.1	
Hydraulic module							
Head ratings	(H)	kPa	127	108	105	153	
Storage tank capacity	(H)	l	185	185	185	200	
Expansion vessel	l		5	5	5	16	
Noise levels							
Noise power level (basic version)	(H)	dB(A)	83	83	83	83	
Noise pressure level (basic unit)	(H)	dB(A)	51	51	51	51	
Noise power level (LN version)	(H)	dB(A)	81	81	81	81	
Noise pressure level (LN version)	(H)	dB(A)	49	49	49	49	
Noise power level (SLN version)	(H)	dB(A)	76	77	78	78	
Noise pressure level (SLN version)	(H)	dB(A)	44	45	46	46	
Basic version dimensions and weights							
Length	mm		1750	1750	1750	2233	
Depth	mm		1003	1003	1003	1020	
Height	mm		1400	1400	1400	1738	
Operating weight	kg		428	439	453	631	